



# MONTHLY MEMBERSHIP PROGRESS REPORT

District 310 A1

Results as of: 06/30/2018

GMT: TERESA MANN

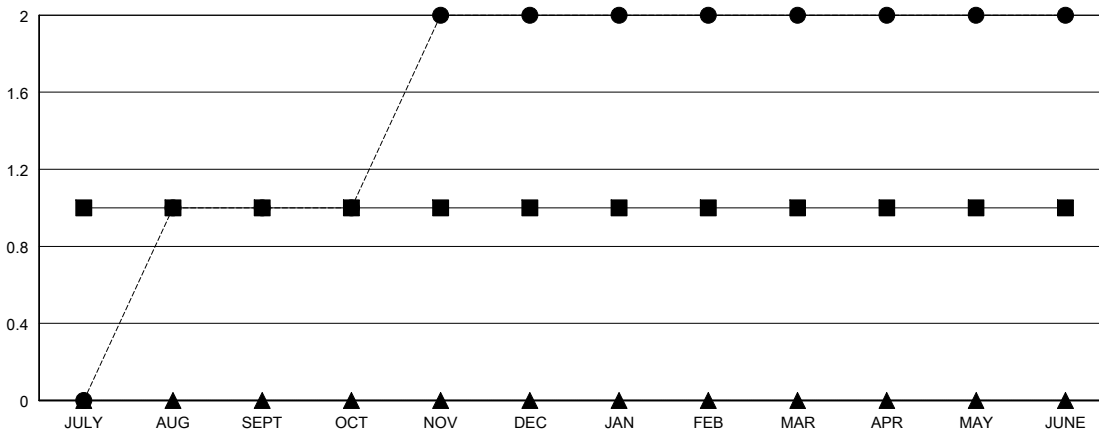
LOCATION THAILAND

GMT CA

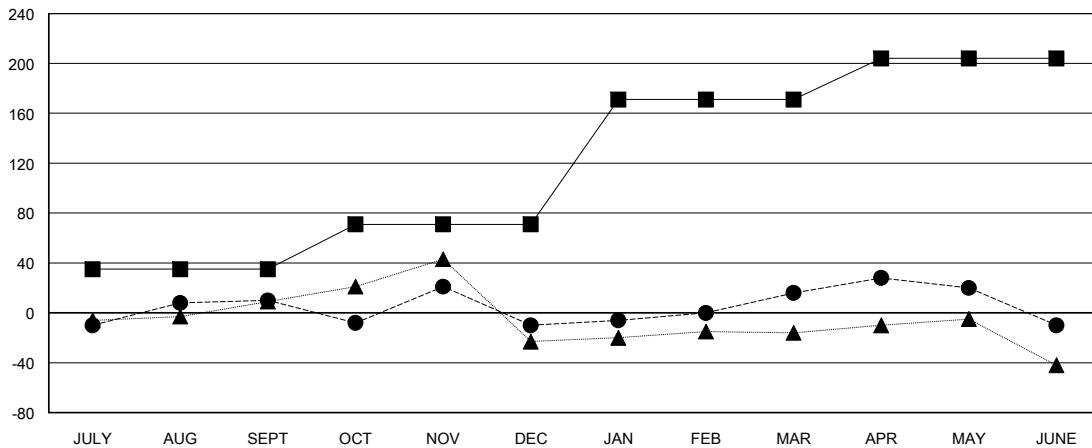
Clubs			
RESULTS FOR 2017-2018			
QUARTER	NEW CLUB GOAL	NEW CLUBS	DROPPED CLUBS
JULY/AUG/SEPT	1	1	0
OCT/NOV/DEC	0	1	0
JAN/FEB/MAR	0	0	1
APR/MAY/JUNE	0	0	0

Members			
RESULTS FOR 2017-2018			
QUARTER	MEMBER GROWTH NET GOAL	MEMBER GROWTH ACTUAL	DROPPED MEMBERS ACTUAL (including transfers)
JULY/AUG/SEPT	35	35	24
OCT/NOV/DEC	36	51	69
JAN/FEB/MAR	100	43	16
APR/MAY/JUNE	33	78	97

GOALS AND ACTUAL NEW CLUBS CUMULATIVE



GOALS AND ACTUAL MEMBERS CUMULATIVE



DROPPED CLUBS: 1
------------------

24 CLUBS OF 38 ADDED 1 OR MORE NEW MEMBERS

GENDER DISTRIBUTION	
MALE	419 (50.85%)
FEMALE	405 (49.15%)
Women Percentage Fiscal Year Goal: 48%	

DROPPED MEMBERS	
DECEASED	1
CLUB CANCELLED	0
OTHER	205
<b>TOTAL</b>	<b>206</b>

[CLICK HERE FOR CUMULATIVE MEMBERSHIP DATA](#)

TOTAL FAMILY UNIT MEMBERS	0
FAMILY MEMBERS PAYING HALF DUES	0